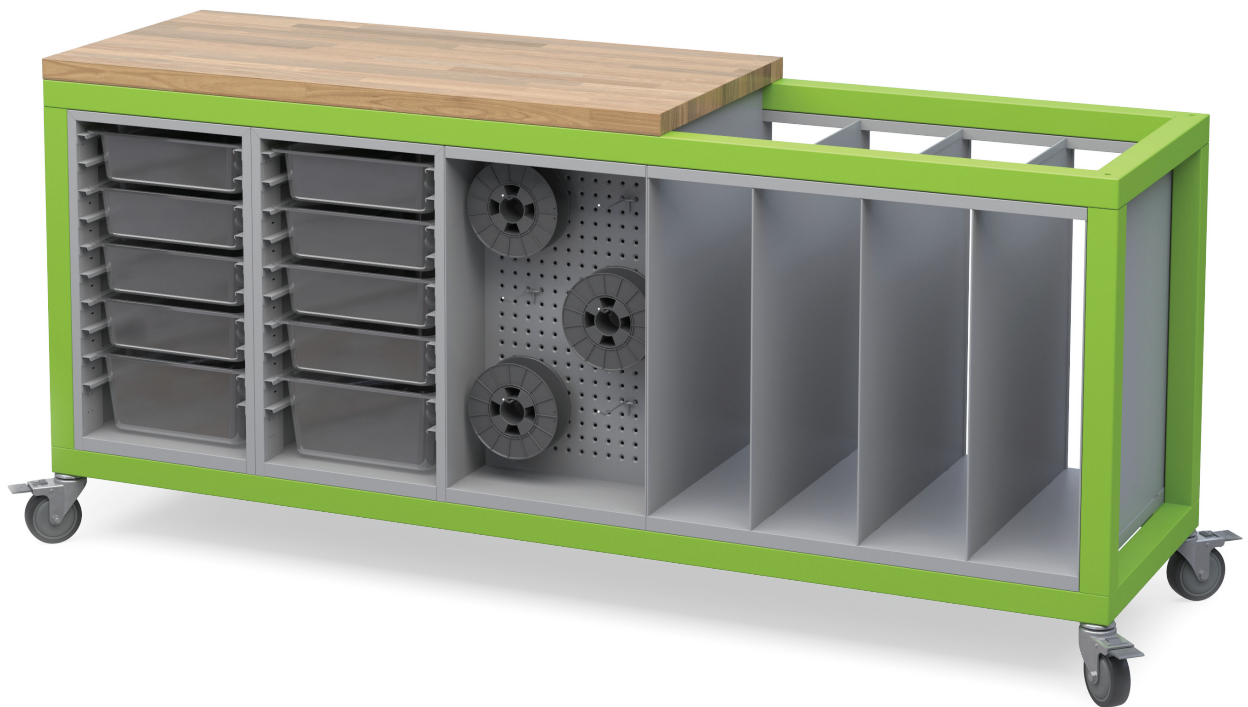




EXPLORER SERIES CUT SHEETS

Cargo Cart	2
Maker Table	4
The Rover™ Table	6
Tall Storage Cart	8
Think Nook	10



CG1BBPL2.2246

CARGO CART

Successful Makerspaces and STEM Labs require access to a broad range of materials and resources to foster learning through inquiry. The Explorer Cargo Cart by Haskell Education is the perfect support solution to our Rover Table and our Maker Table allowing easy access to all the many different maker manipulatives needed. Its ease of mobility allows for easy access to any area of the classroom where maker activities happen or it can follow its companion The Rover™ Table from room to room.

Learn. Think. Do.™

Furniture solutions for flexible and agile learning environments that encourage individual choice, increased movement and dynamic student engagement.

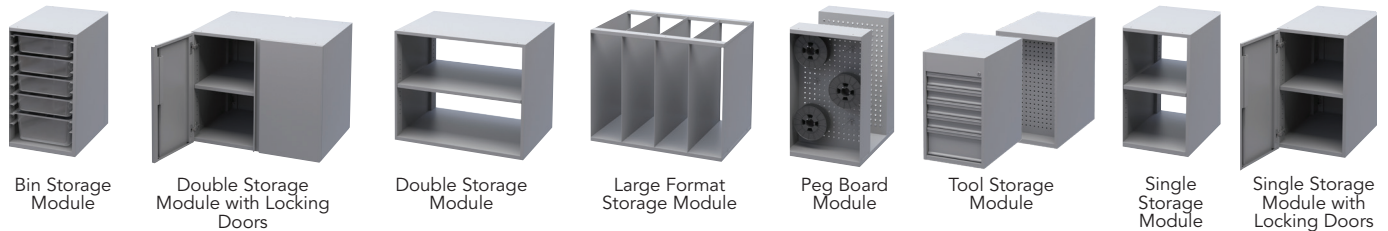


MAKE YOUR OWN CARGO CART

The universal frame design allows the Cargo Cart to be configured with multiple storage and top configurations depending on the curriculum needs. The Cargo Cart can accommodate many different types of materials from craft paper, makers, crayons, modeling clay, Legos to more complex items like 3D printing spools, poster boards, and large pieces of wood. Our standard butcher block top adds to the durability of this cart and comes either in a 2/3 length to work with the open format storage or with a full top to support additional equipment.

UNLIMITED STORAGE OPTIONS

The Cargo Cart frame is designed to accommodate multiple storage options. There are 8 different all metal storage modules that can be specified individually or in combination to create your own unique storage solution. Most of the modules can be accessed from both sides of the cart making the configuration process simple and easy. In addition to bin storage, tool storage, peg board storage and a large format /materials bin, two sizes of shelving can be specified as either open or with locking doors. The tool storage module comes with a peg board wall on the back side.



DURABILITY AND MOBILITY



The Cargo Cart is constructed with an all metal welded frame for a life time of use, a hallmark of Haskell Education design and construction. With its durable locking casters and standard butcher block top, the Cargo Cart is perfect for active learning environments that require flexibility for multiple types of maker experiences. As part of the Explorer suite of solutions, the Cargo Cart easily supports dedicated and mobile makerspace environments and works seamlessly in any of today's collaborative learning spaces.

FRAME FINISHES

Green Apple

Navy

Platinum

OVERALL DIMENSIONS
- 77.5" X 22" X 35.5"

WARRANTY
- Haskell Education Limited Lifetime Warranty
* see full warranty for terms and conditions

SCAN TO
LEARN MORE



haskelleducation.com/cargo-cart/

©2023 Haskell Education. All Rights Reserved. Haskell Office®, Rover®, Explorer Series®, Learn Think Do®, Voyager®, and Tesla Table®, Assemble, Ethos, Captiva, Disco, Echo, Fuzion, Smart, Market, Marathon, and 360 are trademarks of Haskell Office, LLC.





MAKER TABLE

Makerspaces are collaborative learning environments where people come together to learn new skills, exchange ideas and share resources. They are as unique as the school cultures they represent and require flexible and configurable solutions for working, exploring and discovering. The Explorer Maker Table by Haskell Education has been designed to meet the demanding needs of these creative environments.

Learn. Think. Do.™

Furniture solutions for flexible and agile learning environments that encourage individual choice, increased movement and dynamic student engagement.



MAKE YOUR OWN MAKERS TABLE

The universal frame design allows the Maker Table to be configured with or without storage. The simple open frame option is perfect for spaces where storage is not required at the table and a more open feeling is desired. Our standard butcher block top adds to the durability of this table and with the simple addition of the power module and extension cord, the Maker Table is ready to work in any creative environment.

UNLIMITED STORAGE OPTIONS

The Maker Table frame is designed to accommodate multiple storage options. There are 7 different all metal storage modules that can be specified individually or in combination to create your own unique storage solution. Most of the modules can be accessed from both sides of the table making the configuration process simple and easy. In addition to bin storage, tool storage, and peg board storage, two sizes of shelving can be specified as either open or with locking doors. The tool storage module comes with a peg board wall on the back side.



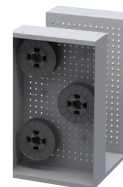
Bin Storage Module



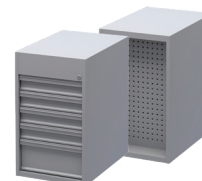
Double Storage Module with Locking Doors



Double Storage Module



Peg Board Module



Tool Storage Module



Single Storage Module



Single Storage Module with Locking Doors



DURABILITY AND MOBILITY

The Maker Table is constructed with an all metal welded frame for a life time of use, a hallmark of Haskell Education design and construction. With its integrated bumpers at the base level, durable locking casters and standard butcher block top, the Maker Table is perfect for active learning environments that require flexibility for multiple types of maker experiences. As part of the Explorer suite of solutions, the Maker Table easily supports dedicated and mobile makerspace environments and works seamlessly in any of today's collaborative learning spaces.

FRAME FINISHES



OVERALL DIMENSIONS
- 84" X 42" X 36.5"

WARRANTY
- Haskell Education Limited Lifetime Warranty
* see full warranty for terms and conditions

SCAN TO
LEARN MORE



haskelledge.com/maker-table/

©2023 Haskell Education. All Rights Reserved. Haskell Office®, Rover®, Explorer Series®, Learn Think Do®, Voyager®, and Tesla Table®, Assemble, Ethos, Captiva, Disco, Echo, Fuzion, Smart, Market, Marathon, and 360 are trademarks of Haskell Office, LLC.





Gold Award Winner for classroom furniture that enhances the learning environment



THE ROVER™ TABLE

The makerspace movement is becoming a powerful part of many school district curriculums. Schools are repurposing classrooms, renovating computer labs, and retooling media centers to accommodate the tools required for these creative spaces. But for schools who do not have the extra space to give up, Haskell Education has created The Rover™ Table. Engineered to be easily transported across the hall or across the district, The Rover™ Table is the ideal solution for a shared maker curriculum.

Learn. Think. Do.™

Furniture solutions for flexible and agile learning environments that encourage individual choice, increased movement and dynamic student engagement.

RVIEBXXXB



MAKE ANY SPACE A MAKERSPACE

Whether your school has a dedicated makerspace or not, mobile makerspaces are an excellent solution for ensuring your maker activities are available when and where they are needed. With an open frame design that accommodates 6 stacking stools, integrated power, and a top that easily lifts and retracts to fit through a standard 30" doorway, **The Rover™ Table** removes the limitations that mobile makerspaces have had in the past.

EVERYTHING YOU NEED

The Rover™ Table comes standard with two bin storage units (10 bins total) that can be accessed from either side of the table and is fully equipped with all the electrical connections needed to power this mobile table on the go. With 6 duplex outlets, 4 USB connections and an integrated power cord, the Rover table can be quickly powered up for a full range of creative activities. 6 stackable stools can be easily placed in the center of the table when the top is up for convenient transportation between classrooms.



DURABILITY AND MOBILITY

The Rover™ Table is constructed with an all metal welded frame for a life time of use, a hallmark of Haskell Education design and construction. With its integrated bumpers at the base level, durable locking casters and standard butcher block top, The Rover™ Table is perfect for active learning environments that need to be re-configured for multiple learning modalities. As part of the Explorer suite of solutions, The Rover™ Table easily supports dedicated and mobile makerspace environments and works seamlessly in any of today's collaborative learning spaces.



FRAME FINISHES



OVERALL DIMENSIONS

- Table: 84" X 42" X 36.5"
- Mobile: 84" X 29.5" X 50.5"
- Top: 84" X 42" X 1.5"

WARRANTY

- Haskell Education Limited Lifetime Warranty
- * see full warranty for terms and conditions

SCAN TO
LEARN MORE



haskelledge.com/rover-table/

©2023 Haskell Education. All Rights Reserved. Haskell Office®, Rover®, Explorer Series®, Learn Think Do®, Voyager®, and Tesla Table®, Assemble, Ethos, Captiva, Disco, Echo, Fuzion, Smart, Market, Marathon, and 360 are trademarks of Haskell Office, LLC.





TSTOR02

TALL STORAGE CART

This tall, versatile, mobile storage unit offers a sleek design solution for classroom storage and makerspaces and is available with either tote bins or fixed open shelves for large format storage. As part of the Explorer Storage System the Tall Storage Cart allows educators to organize, store and distribute learning materials or maker manipulatives. The integrated whiteboard back expands the functionality of this unit making it the perfect storage solution for any learning environment.

Learn. Think. Do.™

Furniture solutions for flexible and agile learning environments that encourage individual choice, increased movement and dynamic student engagement.



TSTOR02



TSTOR01



6" H X 20.875" L X 12.74" W

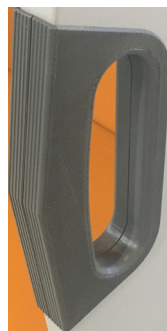
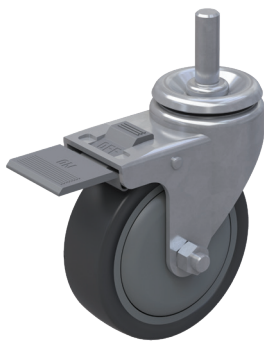
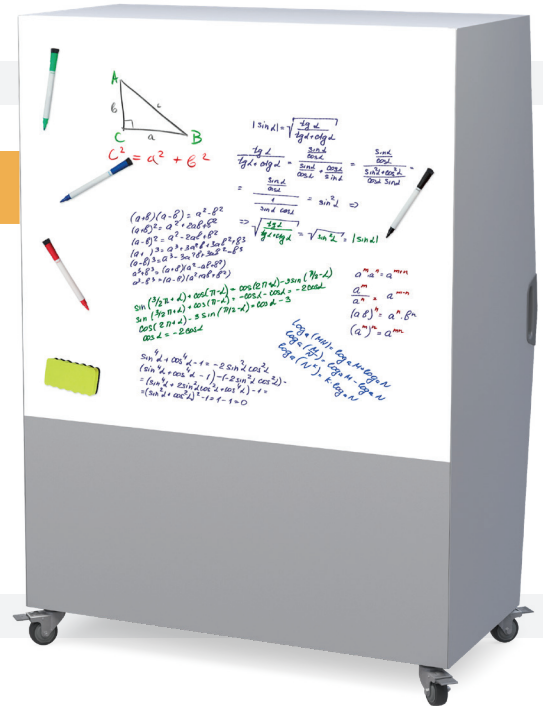
STORAGE OPTIONS

The Tall Storage Cart configured for bin storage accommodates 24 durable clear totes which can accommodate a multitude of learning materials while the open format storage unit with 4 fixed shelves allows for the storage of larger items as well as maker projects that are a work in process. The extra deep shelves assure that many different types of storage needs will be met.

VERSATILITY

The Tall Storage Cart comes standard with a white board surface on the back of the cart. Because the entire case is of metal construction magnetic markers and erasers can easily be attached for quick access. Equipped with heavy duty casters, the entire unit can easily be oriented so that the back side can serve as an ideation space for small groups or individual problem solving.

ALL METAL CONSTRUCTION
FOR INCREASED DURABILITY



DURABILITY AND MOBILITY

The Tall Storage Cart case is constructed with all metal components for a life time of use, a hallmark of Haskell Education design and construction. With the integrated handle design, durable locking casters and all metal construction, the Tall Storage Cart is perfect for active learning spaces that need to be re-configured for multiple learning modalities. As part of the Explorer suite of solutions, the Tall Storage Cart easily supports dedicated and mobile makerspace environments.

OVERALL DIMENSIONS

- 47" X 26.5" X 66"
- 4 Shelf Configuration: 45"W X 21.5"D X 14"H
- 8 Shelf Configuration: 45"W X 21.5"D X 6.5"H

FINISH

Platinum

WARRANTY

- Haskell Education Limited Lifetime Warranty
- * see full warranty for terms and conditions

SCAN TO
LEARN MORE



haskelleducation.com/tall-storage-cart/

©2023 Haskell Education. All Rights Reserved. Haskell Office®, Rover®, Explorer Series®, Learn Think Do®, Voyager®, and Tesla Table®, Assemble, Ethos, Captiva, Disco, Echo, Fuzion, Smart, Market, Marathon, and 360 are trademarks of Haskell Office, LLC.





Gold Award Winner for classroom furniture that enhances the learning environment



THKNK01E

THINK NOOK

Academic success goes hand in hand with social and emotional learning. As such, the emerging design criteria for today's collaborative classroom should contain a multitude of tools designed to help teachers build their students strengths, enhance their learning styles and support healthy transitions between group work and individualized learning. The Explorer Series Think Nook is the perfect solution for students who need quiet time to think, read or simply recharge.

Learn. Think. Do.™

Furniture solutions for flexible and agile learning environments that encourage individual choice, increased movement and dynamic student engagement.

ALL METAL CONSTRUCTION FOR INCREASED DURABILITY



THKNK01E

COMFORT AND FUNCTIONALITY

The Think Nook works as a comfortable space for one or two students to sit and collaborate as a team or provides for a more personal "me" space. The upholstered seat, back and ceiling of the Think Nook help create a quiet and reflective enclave separate from the more collaborative parts of today's busy classroom. Convenient cubby storage space below the seat combined with a duplex outlet for charging of devices make this the perfect solution for all types of learning environments.

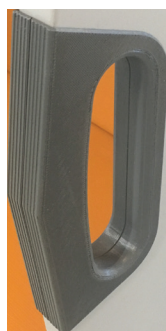
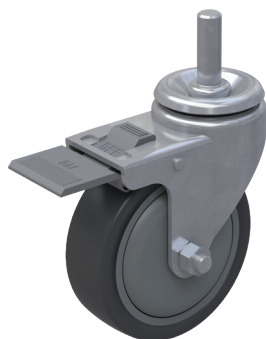
VERSATILITY

The Think Nook comes standard with a white board surface on the back of the unit. Because the entire case is of metal construction magnetic markers and erasers can easily be attached for quick access. Equipped with heavy duty casters, the entire unit can easily be oriented so that the back side can serve as an ideation space for small groups or individual problem solving.



DURABILITY AND MOBILITY

The Think Nook case is constructed with all metal components for a life time of use, a hallmark of Haskell Education design and construction. With the integrated handle design, durable locking casters and all metal construction, the Think Nook is perfect for active learning spaces that need to be re-configured for multiple learning modalities. As part of the Explorer suite of solutions, the Think Nook easily supports dedicated and mobile makerspace environments and works seamlessly in any of today's collaborative learning spaces.



OVERALL DIMENSIONS
- 47" X 26.5" X 66"

FINISH

Platinum

WARRANTY

- Haskell Education Limited Lifetime Warranty
* see full warranty for terms and conditions

SCAN TO
LEARN MORE



haskelledge.com/think-nook/

©2023 Haskell Education. All Rights Reserved. Haskell Office®, Rover®, Explorer Series®, Learn Think Do®, Voyager®, and Tesla Table®, Assemble, Ethos, Captiva, Disco, Echo, Fuzion, Smart, Market, Marathon, and 360 are trademarks of Haskell Office, LLC.

