



## MAKER TABLE WITH ROVER STOOLS

Makerspaces are collaborative learning environments where people come together to learn new skills, exchange ideas and share resources. They are as unique as the school cultures they represent and require flexible and configurable solutions for working, exploring and discovering. The Explorer Maker Table by Haskell Education has been designed to meet the demanding needs of these creative environments.

### Learn. Think. Do.™

Furniture solutions for flexible and agile learning environments that encourage individual choice, increased movement and dynamic student engagement.

RVSTOOL-PL  
ROVER TABLE  
STOOLS



MK1EXXX  
OPTIONAL POWER MODULE AND  
EXTENSION CORD SHOWN

## MAKE YOUR OWN MAKERS TABLE

The universal frame design allows the Maker Table to be configured with or without storage. The simple open frame option is perfect for spaces where storage is not required at the table and a more open feeling is desired. Our standard butcher block top adds to the durability of this table and with the simple addition of the optional power module and optional extension cord, the Maker Table is ready to work in any creative environment.

## UNLIMITED STORAGE OPTIONS

The Maker Table frame is designed to accommodate multiple storage options. There are 7 different all metal storage modules that can be specified individually or in combination to create your own unique storage solution. Most of the modules can be accessed from both sides of the table making the configuration process simple and easy. In addition to bin storage, tool storage, and peg board storage, two sizes of shelving can be specified as either open or with locking doors. The tool storage module comes with a peg board wall on the back side.



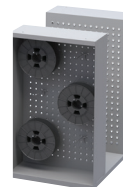
Bin Storage  
Module



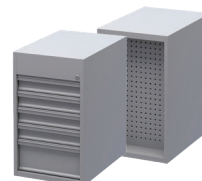
Double Storage  
Module with  
Locking Doors



Double Storage  
Module



Peg Board  
Module



Tool Storage  
Module



Single  
Storage  
Module



Single Storage  
Module with  
Locking Doors



## DURABILITY AND MOBILITY

The Maker Table is constructed with an all metal welded frame for a life time of use, a hallmark of Haskell Education design and construction. With its integrated bumpers at the base level, durable locking casters and standard butcher block top, the Maker Table is perfect for active learning environments that require flexibility for multiple types of maker experiences. As part of the Explorer suite of solutions, the Maker Table easily supports dedicated and mobile makerspace environments and works seamlessly in any of today's collaborative learning spaces.

## FRAME FINISHES



### OVERALL DIMENSIONS

- Table: 84" X 42" X 36.5"
- Top: 84" X 42" X 1.5"

### WARRANTY

- Haskell Education Limited Lifetime Warranty
- \* see full warranty for terms and conditions

SCAN TO  
LEARN MORE



[haskelledge.com/](https://haskelledge.com/)

©2024 Haskell Education. All Rights Reserved. Haskell Office®, Rover®, Explorer Series®, Learn Think Do®, Disco®, Voyager®, and Tesla Table®, Assemble, Ethos, Captiva, Echo, Fuzion, Explorer, Smart, Market, Marathon, and 360, 360 Chair and 360 Seating are trademarks of Haskell Office, LLC.

