



TSTOR02

## TALL STORAGE CART

This tall, versatile, mobile storage unit offers a sleek design solution for classroom storage and makerspaces and is available with either tote bins or fixed open shelves for large format storage. As part of the Explorer Storage System the Tall Storage Cart allows educators to organize, store and distribute learning materials or maker manipulatives. The integrated whiteboard back expands the functionality of this unit making it the perfect storage solution for any learning environment.

## Learn. Think. Do.™

Furniture solutions for flexible and agile learning environments that encourage individual choice, increased movement and dynamic student engagement.



TSTOR02



TSTOR01



6" H X 20.875" L X 12.74" W

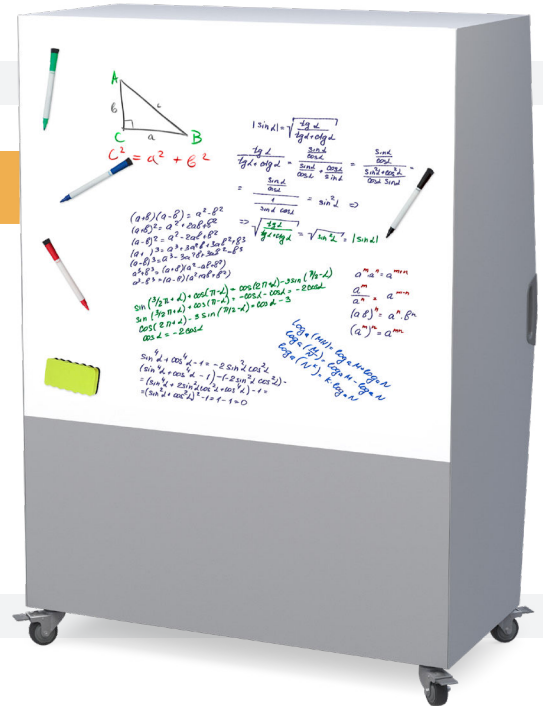
## STORAGE OPTIONS

The Tall Storage Cart configured for bin storage accommodates 24 durable clear totes which can accommodate a multitude of learning materials while the open format storage unit with 4 fixed shelves allows for the storage of larger items as well as maker projects that are a work in process. The extra deep shelves assure that many different types of storage needs will be met.

## VERSATILITY

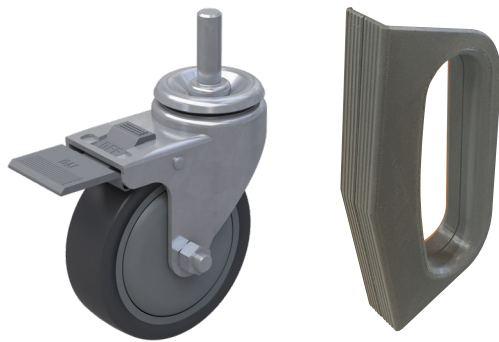
The Tall Storage Cart comes standard with a white board surface on the back of the cart. Because the entire case is of metal construction magnetic markers and erasers can easily be attached for quick access. Equipped with heavy duty casters, the entire unit can easily be oriented so that the back side can serve as an ideation space for small groups or individual problem solving.

ALL METAL CONSTRUCTION FOR INCREASED DURABILITY



## DURABILITY AND MOBILITY

The Tall Storage Cart case is constructed with all metal components for a life time of use, a hallmark of Haskell Education design and construction. With the integrated handle design, durable locking casters and all metal construction, the Tall Storage Cart is perfect for active learning spaces that need to be re-configured for multiple learning modalities. As part of the Explorer suite of solutions, the Tall Storage Cart easily supports dedicated and mobile makerspace environments.



### OVERALL DIMENSIONS

- 47" X 26.5" X 66"
- 4 Shelf Configuration: 45"W X 21.5"D X 14"H
- 8 Shelf Configuration: 45"W X 21.5"D X 6.5"H

### FINISH

Platinum

### WARRANTY

- Haskell Education Limited Lifetime Warranty
- \* see full warranty for terms and conditions

SCAN TO LEARN MORE



[haskelleducation.com/tall-storage-cart/](https://haskelleducation.com/tall-storage-cart/)

©2023 Haskell Education. All Rights Reserved. Haskell Office®, Rover®, Explorer Series®, Learn Think Do®, Voyager®, and Tesla Table®, Assemble, Ethos, Captiva, Disco, Echo, Fuzion, Smart, Market, Marathon, and 360 are trademarks of Haskell Office, LLC.

