

# VOYAGER Finish Card



## SOLID WOOD TOP

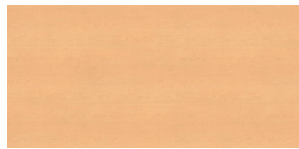


Butcher Block

## WOOD LAMINATE TOPS



Asian Night **NI**



Fuzion Maple **H**



Grey Elm **GE**



Harvest Maple **MH**



Montana Walnut **K**



Natural Rift **NA**

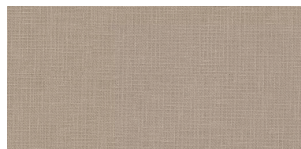


Neo Walnut **NW**



Wild Cherry **WR**

## PATTERN LAMINATE TOPS



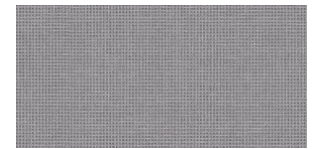
Casual Linen **LC**



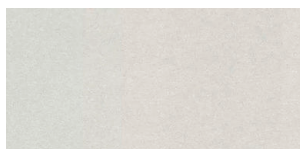
Classic Linen **LN**



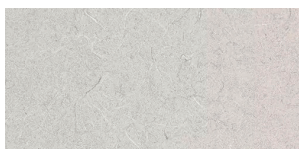
Grey Nebula **GN**



Pressed Linen **PN**



Shadow Zephar **ZS**



White Tigris **TG**

## SOLID LAMINATE TOP



Fog **FF**

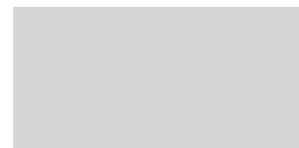
## WRITABLE LAMINATE TOP



White **F9**

Consult price list for upcharges for writable surfaces.

## PAINT COLOR



Platinum\* **PL**

The Platinum paint finish is the only standard color available for all Voyager Series table frames and metal storage carts.

# VOYAGER Finish Card



## WOOD GRAIN 3MM EDGE



Asian Night **AN**



Fusion Maple **I**



Grey Elm **GE**



Harvest Maple **MH**



Montana Walnut **OW**



Natural Rift **RT**



Neo Walnut **NW**



Summer Flame **SM**  
*matches wild cherry laminate*

## SOLID 3MM EDGE



Black **A**



Fog **FG**



Grey **B**



Orange Grove **OG**



Pepper Dust **G**



Primary Yellow **PY**



Slate Grey **SG**



Spectrum Blue **SB**



Spectrum Red **SR**

1. If you require samples, please contact Haskell Education customer support at 800-344-8888 or [sales@haskelleducation.com](mailto:sales@haskelleducation.com).  
Samples can be ordered at <https://www.haskelleducation.com/samples/>
2. Please note: If you select a finish that is not listed above, there may be a custom finish upcharge and additional lead time may apply.
3. The paint color, Platinum, comes in a smooth finish.\*
4. Any Wilsonart - (60 or 38) or Standard Formica - (58) laminates with a quantity of 20+ units with no upcharge.

GSA Contract: GS 29 F 0171G

To order samples visit [haskelleducation.com/samples/](https://www.haskelleducation.com/samples/)